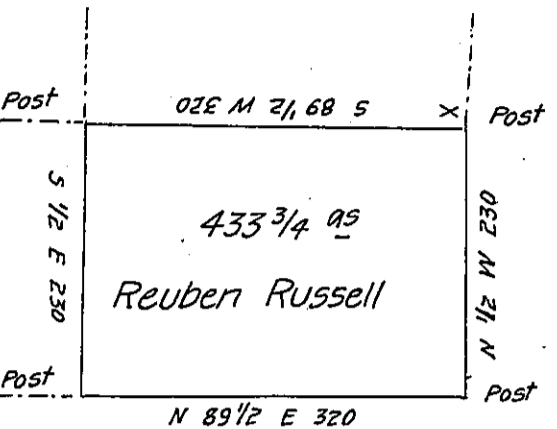


Step<sup>r</sup> Tuttle Jun<sup>r</sup>

Stephen Stannard



In pursuance of a warrant dated February 6<sup>th</sup> 1794  
 Surveyed for Reuben Russell October 16<sup>th</sup> 1797 the above  
 describe<sup>d</sup> tract of land situate near Wysauking Creek in  
 the County of Luzerne Containing Four hundred & thirty  
 three acres & one hundred & twenty perches & allowance  
 of 6 P. Ct

Ant<sup>y</sup>. Crothers D. S.

Dan<sup>l</sup>. Brodhead Esq<sup>r</sup>

Surveyor Gen<sup>l</sup>.

IN TESTIMONY that the above is a copy of the original remaining on file in  
 the Department of Internal Affairs of Pennsylvania, made  
 conformably to an Act of Assembly approved the 16th day of  
 February, 1833, I have hereunto set my Hand and caused  
 the Seal of said Department to be affixed at Harrisburg,  
 this twenty-third day of June 1906.

*James P. Brown*  
 Secretary of Internal Affairs.